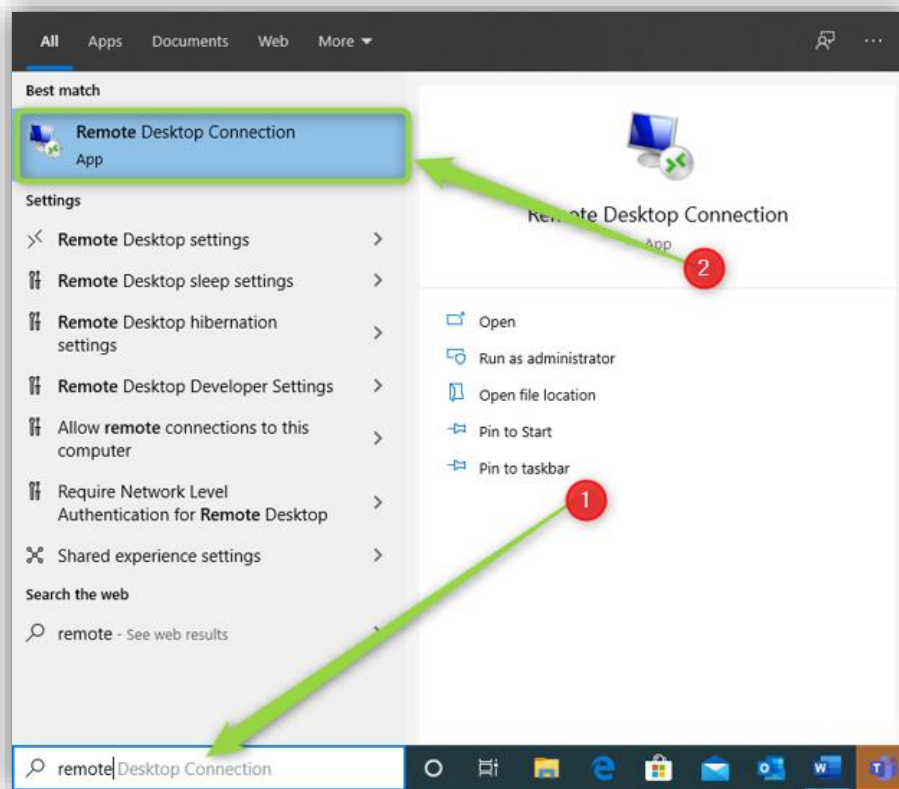
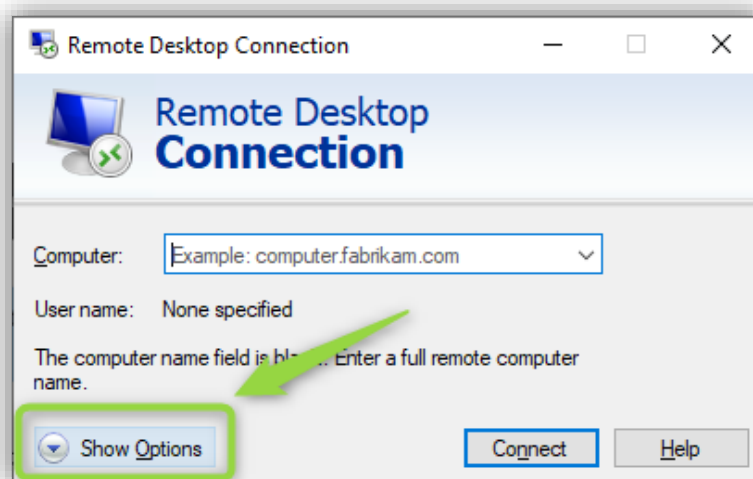


ACCESS REMOTE DESKTOP FROM OFF CAMPUS WINDOWS COMPUTER

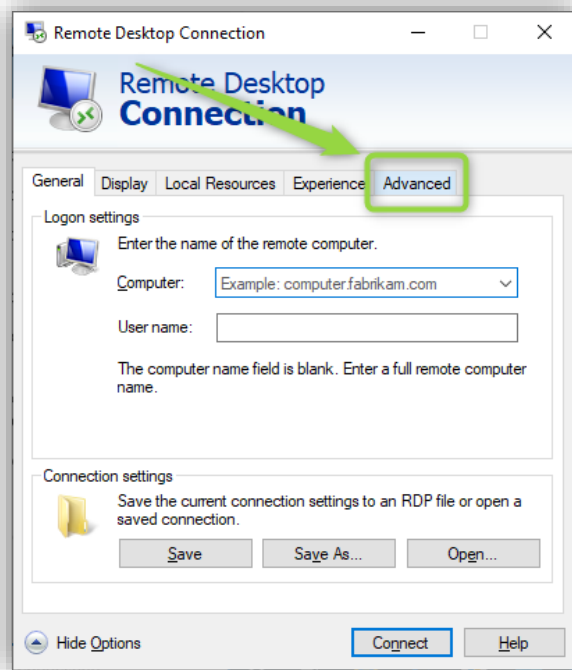
1. First on the Windows Search bar at the bottom left, type in **"Remote"** and select on **"Remote Desktop Connection"**:



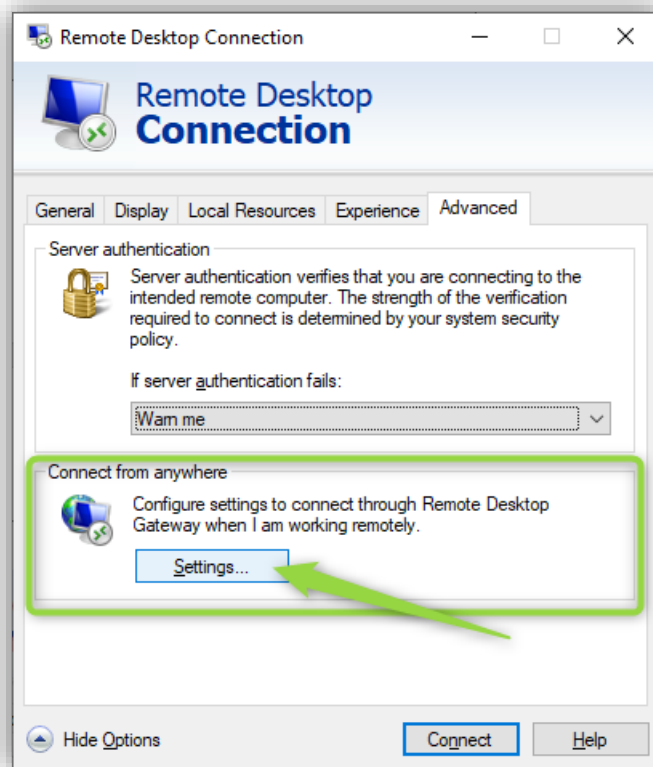
2. Within the next window called **"Remote Desktop Connection"** select the drop down menu called **"Show Options"**:



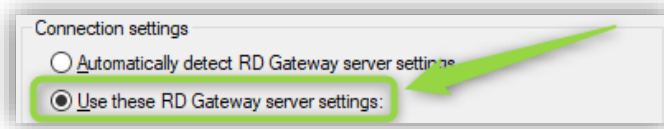
3. Next, click on the tab called **“Advanced”**:



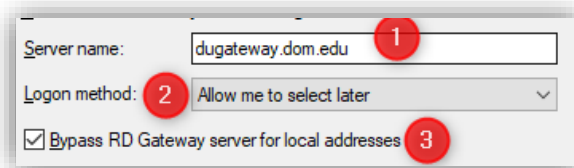
4. Under the **“Connect from anywhere”** section click on the **“Settings”** button:



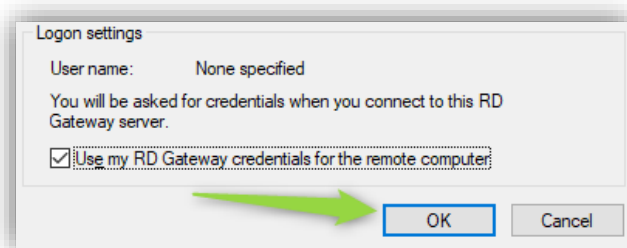
5. In the next window, follow the below steps:
- Under "**Connection Settings**" select the "**Use these RD Gateway server settings:**" radio button:



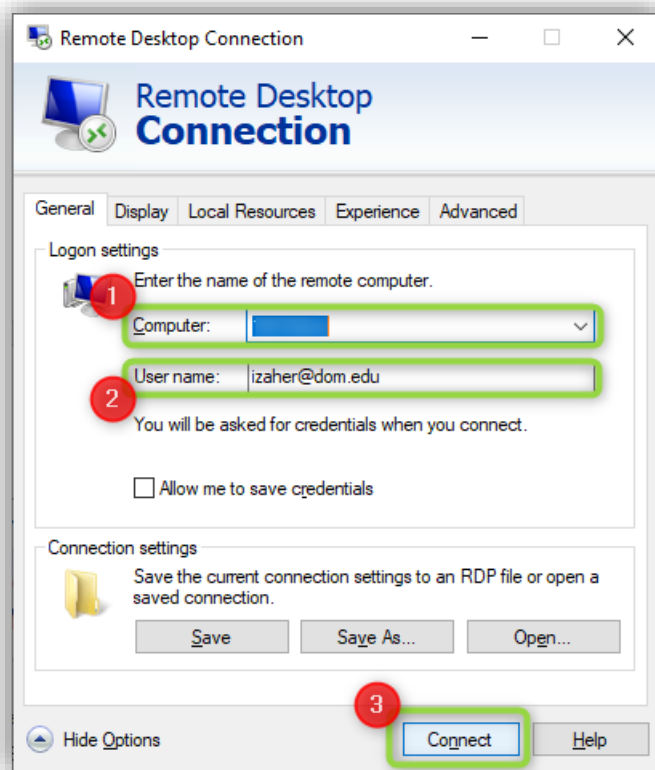
- Next, under "**Server Name:**" enter the "**dugateway.dom.edu**". Also make sure the "**Logon method**" is set to "**Allow me to select later**" and make sure "**Bypass RD Gateway server for local addresses**":



- Lastly, click on the "**OK**" button:



6. Next, click on the “**General**” tab and enter the computer name that you would like to connect to in the “**Computer:**” field and enter your Dominican email address in the “**Username**” field:



7. On the new window prompt, enter your Dominican password and click on “**Okay**”:

